

Intended Use

This equipment is a dental amalgamator designed for mixing dental amalgam.

Technical Specifications

Speeds: 3800 rpm-4800 rpm.

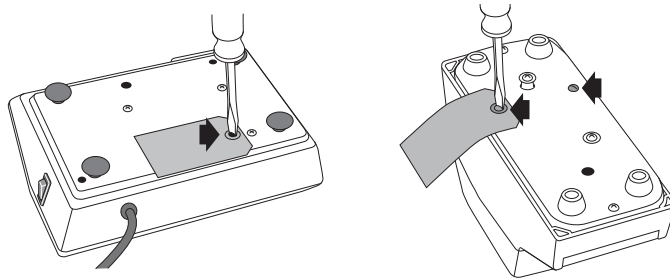
Capacity: Designed to use amalgam capsules with lengths between 1.250" and 1.350".

Power Requirements: 115v \pm 10%, 0.5A, AC, 60 Hz

Fuse Rating: 2 amps, 250 volts

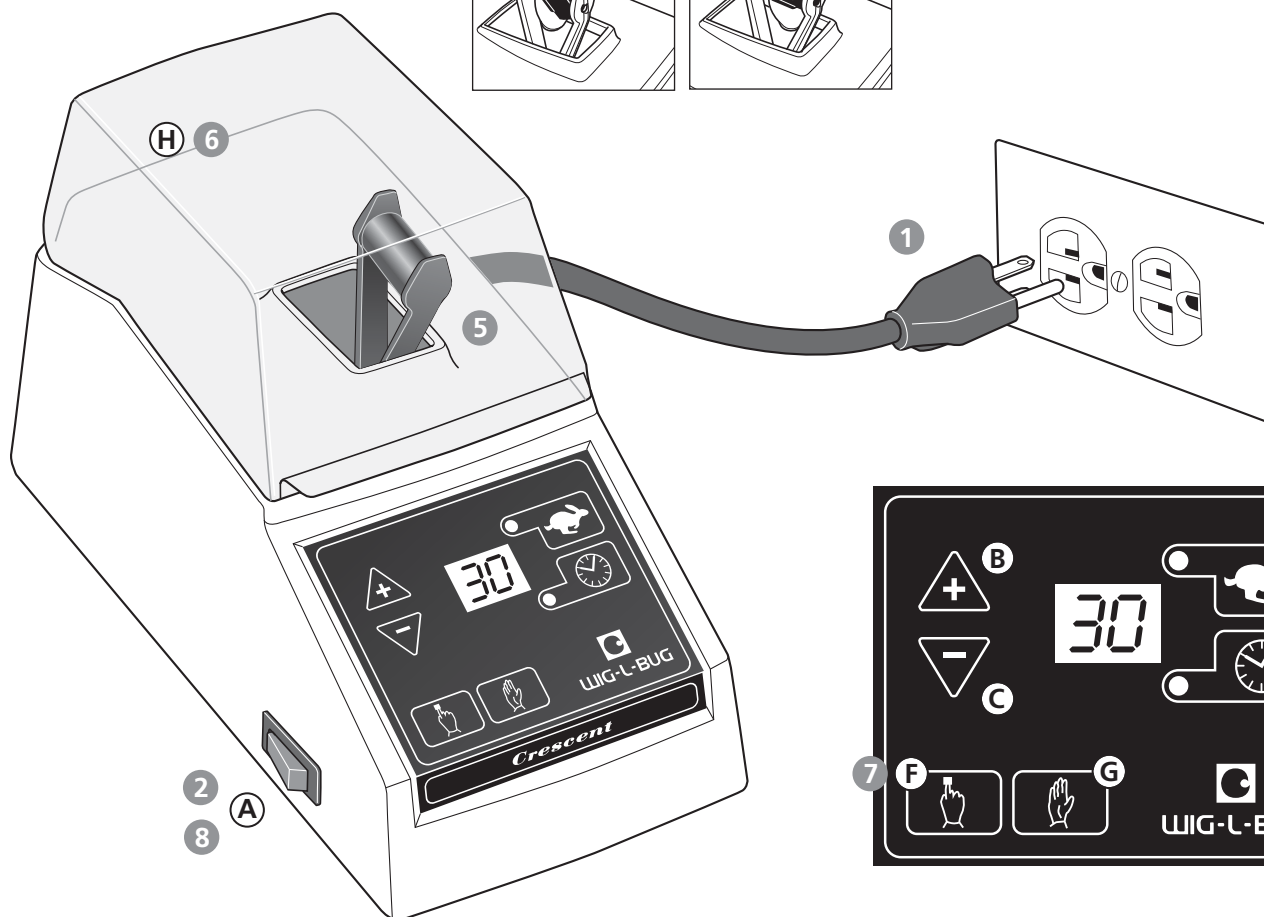
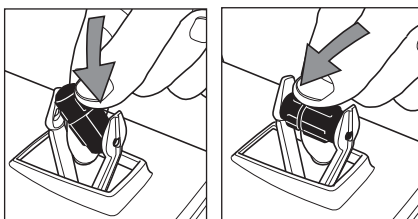
Unpacking

1. Carefully remove unit from packing material.
2. Remove the red packing screws from bottom of the unit. Save the screws; should it ever become necessary to transport your WIG-L-BUG, the screws must be reinstalled to prevent damage in shipping.



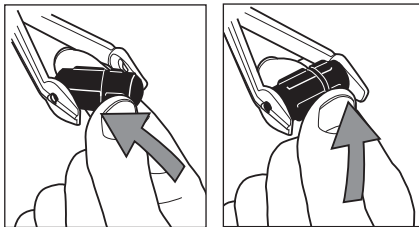
Operation • Model MSD

- 1 Plug into grounded outlet.
- 2 Turn on power switch **A**.
- 3 Set time: Press **E** and adjust with **B & C**. Available range is from 0 to 30 seconds.
- 4 Set speed: Press **D** and adjust with **B & C**. Four speeds are available: 3800, 4200, 4600 and 4800 RPM.
- 5 Load capsule. Insert one end of capsule into holding arm, then push other end down to lock in place. Use only standard amalgam capsules.
- 6 Close safety cover **H**.
- 7 Press **F** to start. Unit will automatically stop when preset time expires. To stop at any time, press **G**.
- 8 Turn off unit when not in use.



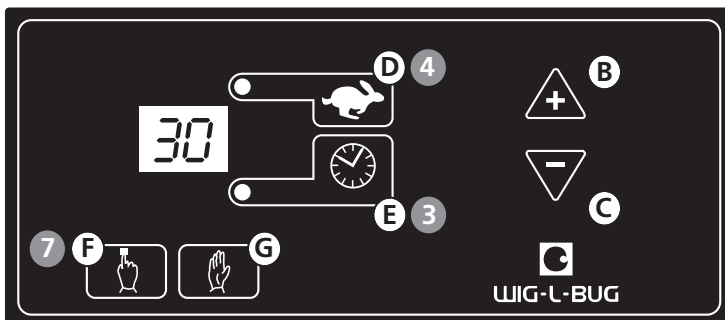
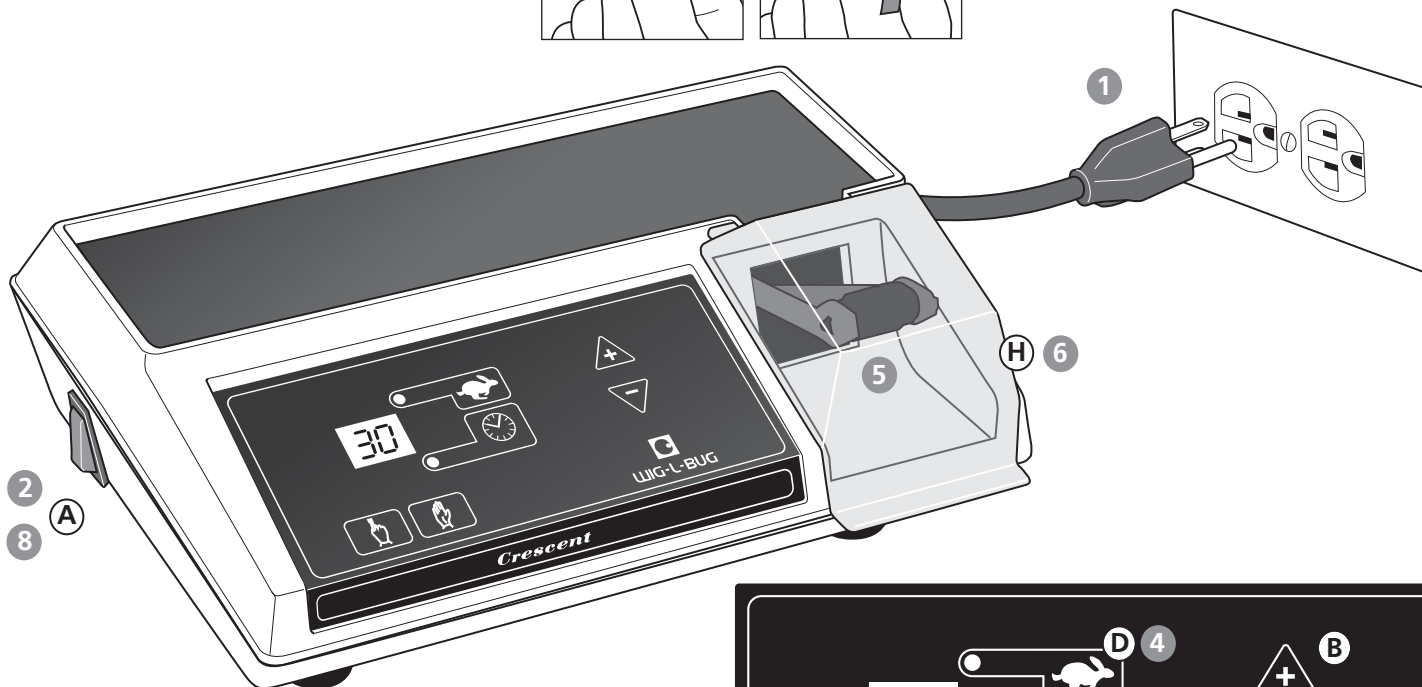
- 1 Plug into grounded outlet.
- 2 Turn on power switch **A**.
- 3 Set time: Press **E** and adjust with **B** & **C**. Available range is from 0 to 30 seconds.
- 4 Set speed: Press **D** and adjust with **B** & **C**. Four speeds are available: 3800, 4200, 4600 and 4800 RPM.

- 5 Load capsule. Insert one end of capsule into holding arm, then push other end down to lock in place.



Use only standard amalgam capsules. The WIG-L-BUG LPD does not accept Fuji capsules or any capsule with a tail or pouring spout.

- 6 Close safety cover **H**.
- 7 Press **F** to start. Unit will automatically stop when preset time expires. To stop at any time, press **G**.
- 8 Turn off unit when not in use.



Environmental Conditions

For indoor use only, and in temperatures of 41°F-104°F (5°C-40°C).

Altitude up to 2000 M.

Maximum relative humidity:
80% for temperatures up to 31°C,
50% for temperatures up to 40°C.

Overvoltage Category II

Pollution Degree II

Ground protective conductor terminal



Maintenance

Unplug from power before cleaning.

Clean with a soft, damp cloth.

Do not use an abrasive cleaner.

Contains no user-serviceable parts.

Warranty

The WIG-L-BUG is warranted for parts and labor for one year after proof of purchase is established.

Caution

Use of this equipment in a manner other than specified by these instructions may impair protection provided by the equipment.

Warning

! This equipment is not designed for use in hazardous atmospheres or with hazardous materials.

! **Mercury is a health hazard.** Tighten capsule completely to prevent mercury escaping during trituration. Immediately replace any capsule that becomes worn or loose-fitting. Close safety cover during use.